



Blue Iris VMS Driver Suite version 1.0.0 (2002)

Quick Start Guide

This guide takes for granted you already know how to download, install and activate the Blue Iris Video Management Software (VMS) for Windows. You also need to have all your cameras configured and working in the software prior of going through the steps of this guide (Do not forget to open the port 81 in Windows Firewall!).

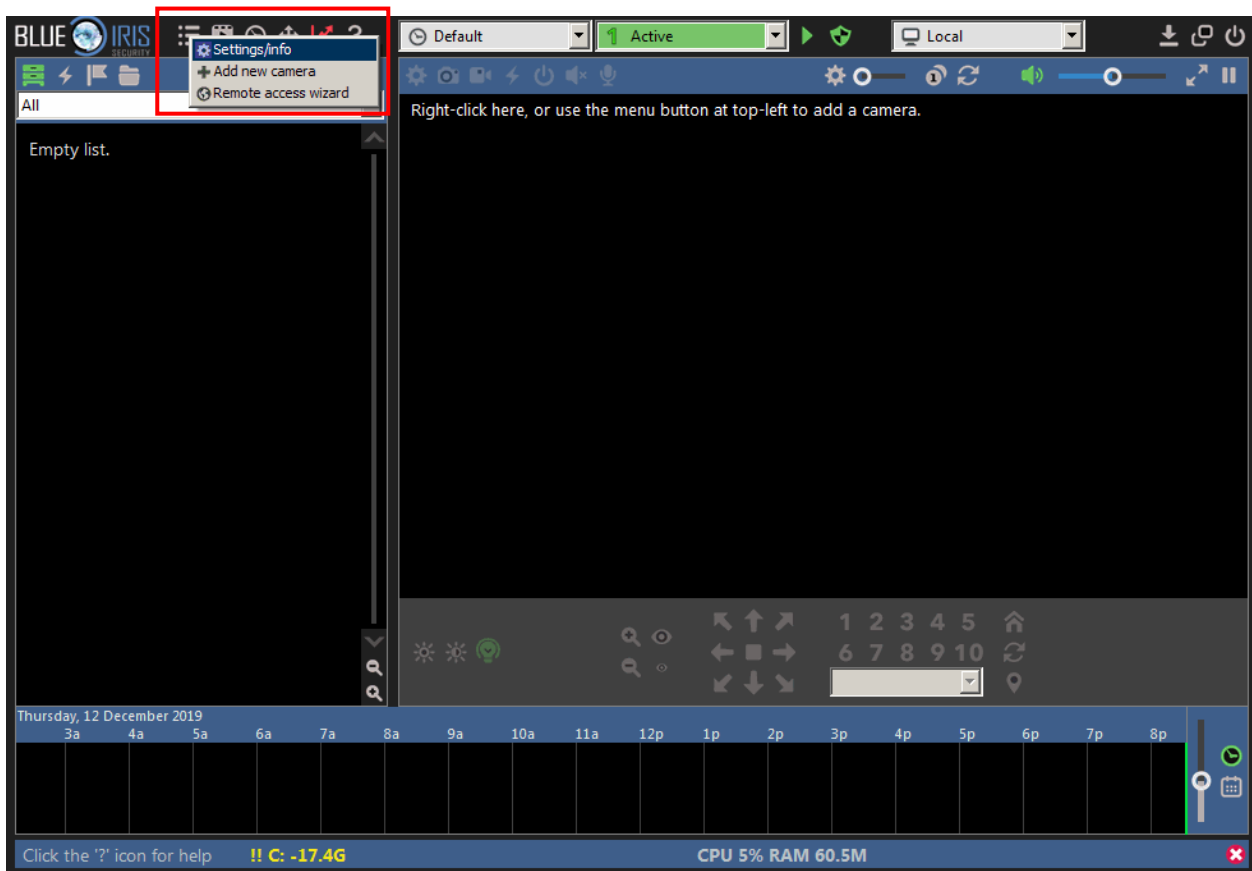
If you need help setting up a Blue Iris system, please refer to the software documentation or request support from the Blue Iris support team.

Blue Iris is available from their website: <https://blueirissoftware.com/>

Step-by-Step guide

Part 1: Preparing a Blue Iris (v5) instance to work with the Domaudeo Blue Iris driver suite for Control4:

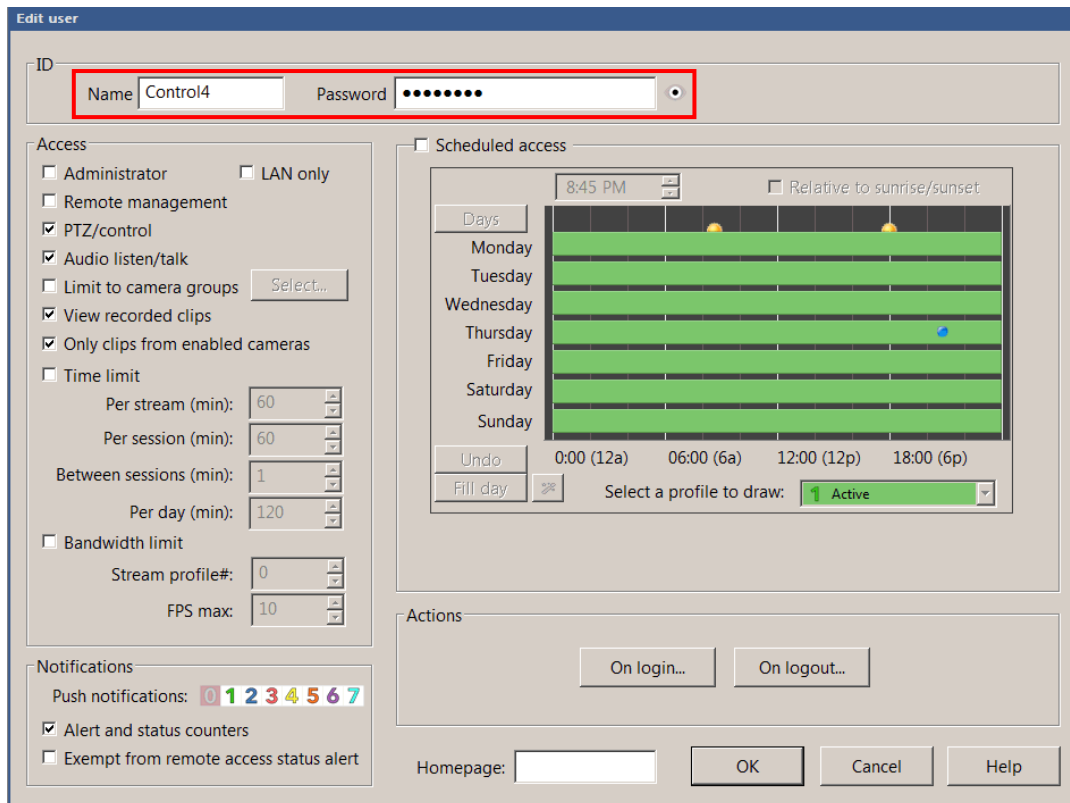
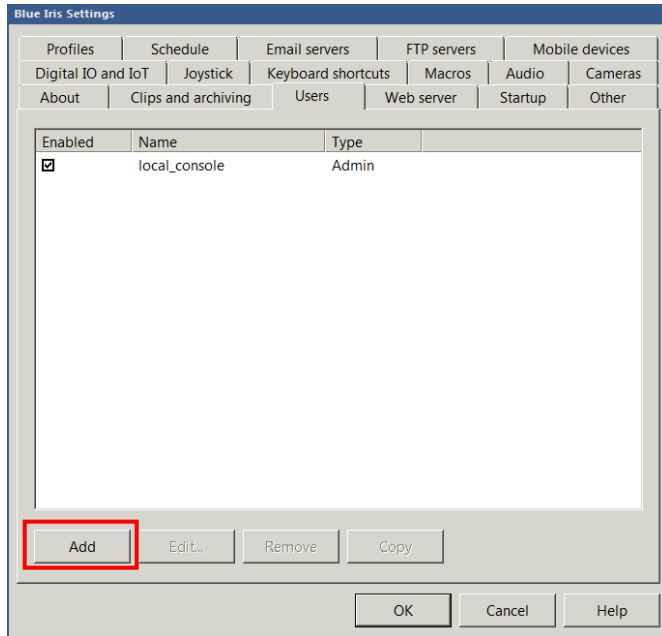
- 1- Open Blue Iris, click the  icon in the left corner and select Settings/Info.



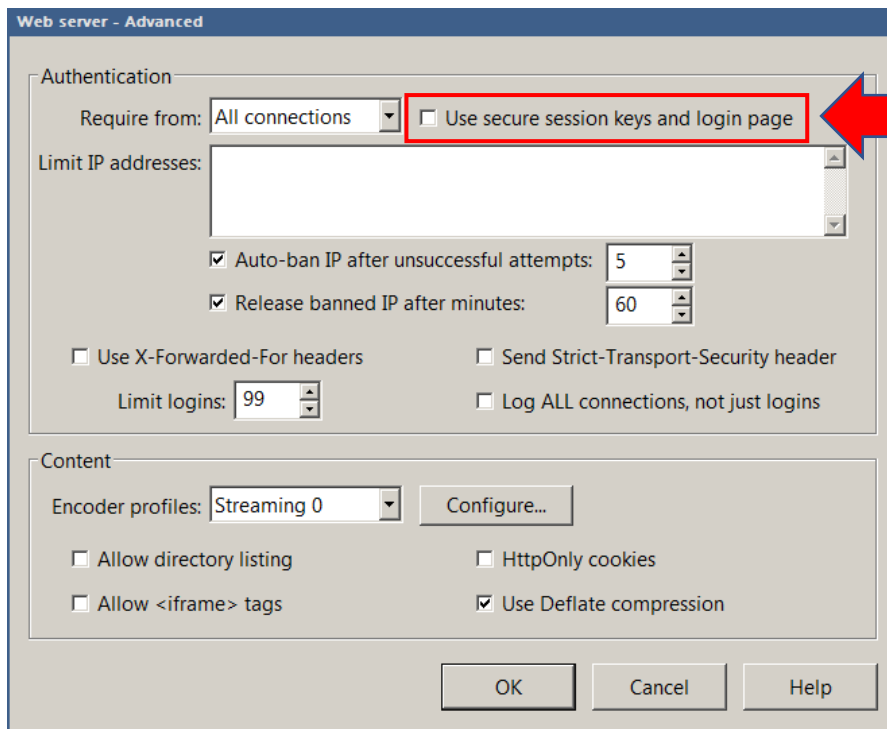
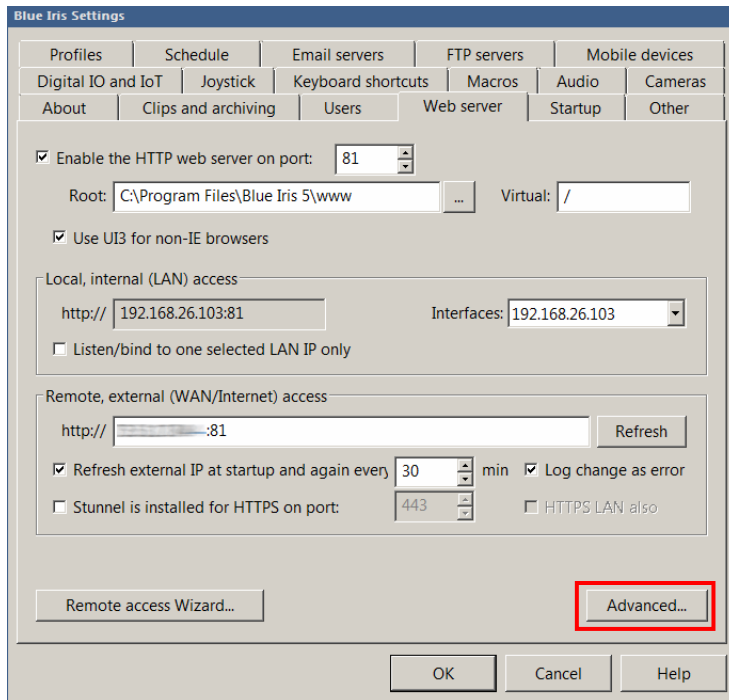
2-

In the Blue Iris Settings Window, go to the Users tab, click **Add** and create a new user named "Control4" with "control4" as password.

Leave any of the options as-is and click **OK**

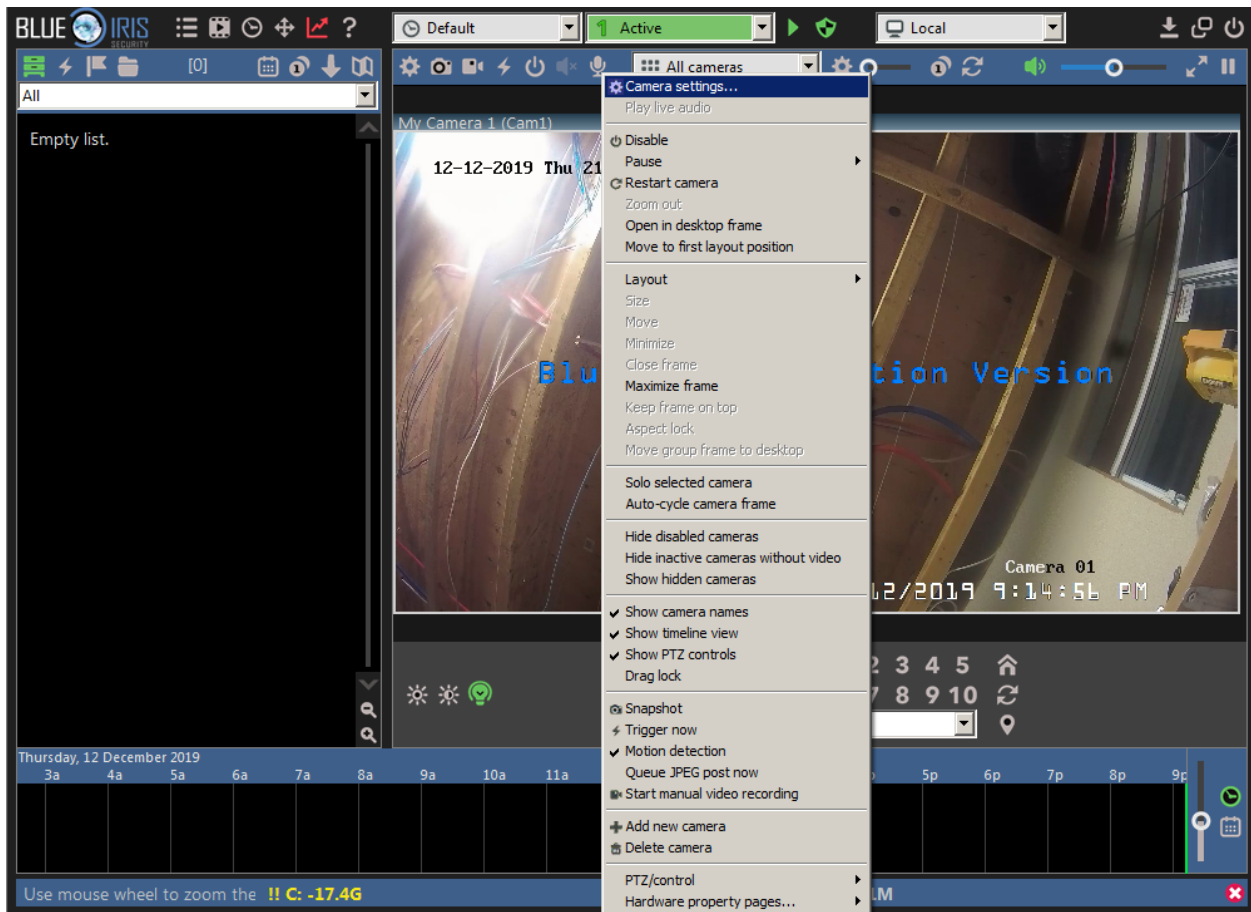


- 3-** Still in the Blue Iris Settings Window, select the Web server tab and click on the **Advanced...** button. **UNCHECK** the **“Use secure session keys and login page”** option on the top of the Web Server – Advanced window. Click OK to close all windows and return to the main screen.

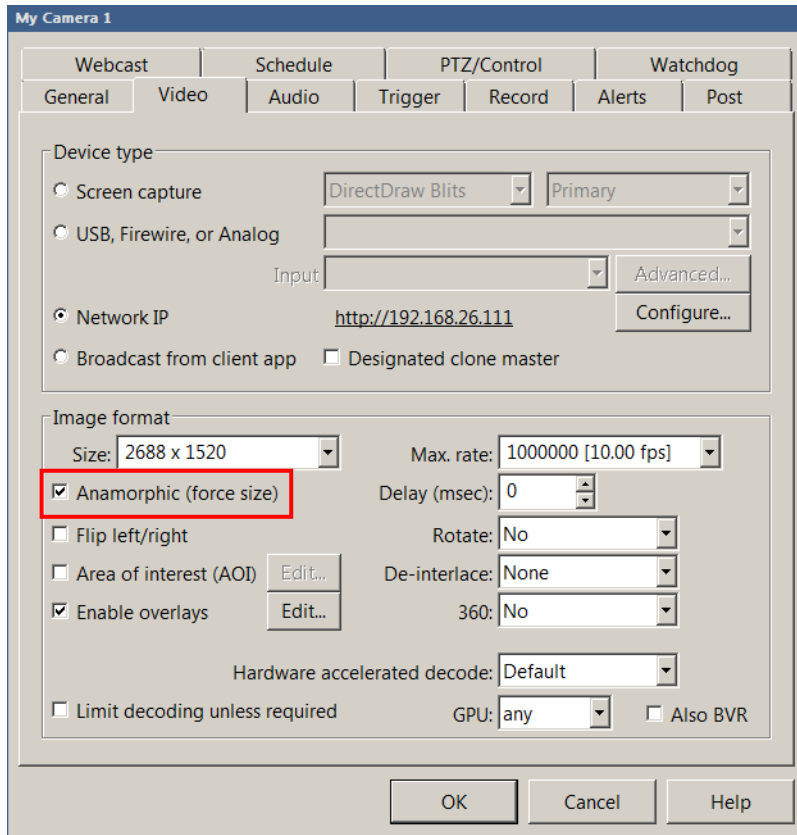


UNCHECK
this option!

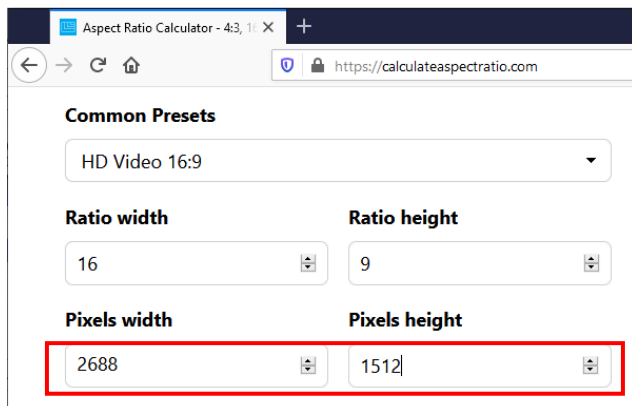
4- On the main screen, Right-Click of your camera and select  Camera settings...



- 5-** In the Camera Settings window, check the “Anamorphic (force size) option and MAKE SURE the Size is set to a 16:9 resolution. If not, change the height to match the width and get a true 16:9 aspect ratio.

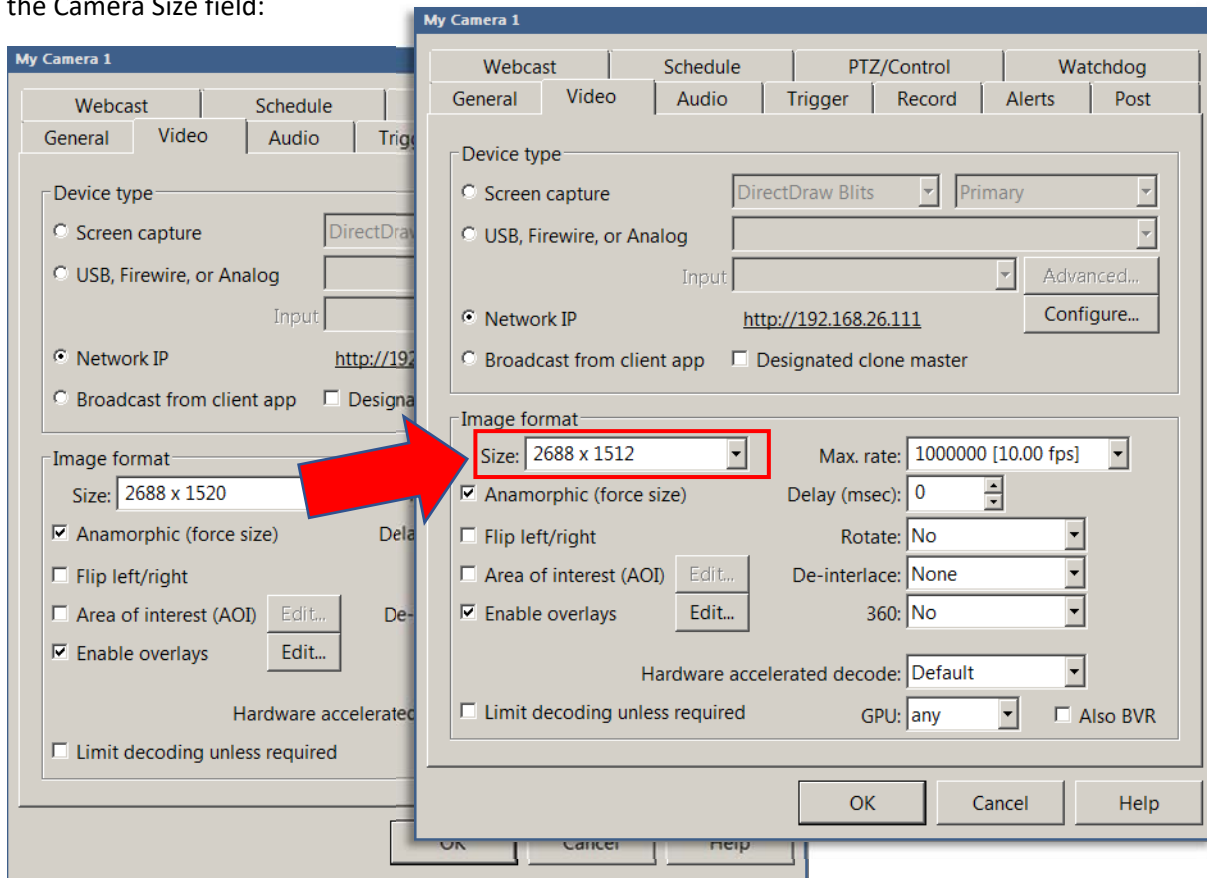


You can use a Screen Ratio Calculator app or website to make sure your aspect ratio is 16:9 compliant, here's an example using <https://calculateaspectratio.com/>



Enter the camera's native Pixel width value and use the calculate Pixel Height value to transpose in Blue Iris

So entering “2688” as width gives us 1512 as the height, not 1520, you need to change the resolution in the Camera Size field:



Most cameras may not need to change their resolution as they already output 16:9 resolution, such as 2MP camera that output a standard 1920x1080 resolution. This step is needed only for higher megapixel cameras that does not output 100% 16:9-compliant resolution such as the 4MP camera used for this example.

- 6-** Add the driver in Composer and enter the IP address and Login info for your Blue Iris server. If you have followed this guide, the Driver Status property should show “success:”

The screenshot displays the 'Properties' window of the Blue Iris software. The window is divided into two main sections: 'Camera Properties' and 'Advanced Properties'.

Camera Properties:

- Address:**
 - Hostname / IP Address: 192.168.26.220 (highlighted with a red box)
 - HTTP Port: 81
 - RTSP (H.264) Port: 81
 - Snapshot Refresh Rate: 60 Sec.
 - Publicly Accessible:
- Authentication:**
 - Required:
 - Username: Control4 (highlighted with a red box)
 - Password: •••••• (highlighted with a red box)
 - Type: Basic
- Aspect Ratio: 16x9
- Buttons: Load Defaults, Help

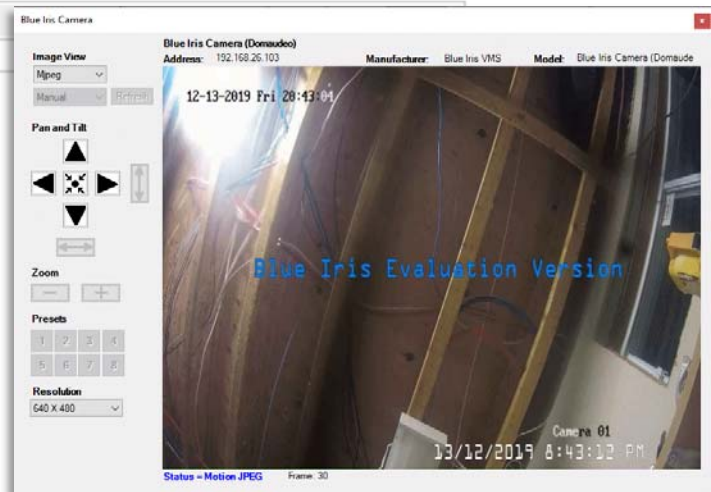
Advanced Properties:

- Properties | Actions | Documentation | Lua
- Driver Version: 1.0.0
- Driver Status: success: (highlighted with a red box)
- License Key: [Empty field]
- License Status: Trial License Verified [24.6 hours left]
- System Name: Maison

7- If everything goes right, you can now choose a camera from the populated list in the driver property, and it will enable a 720p Navigator-compliant stream to display on all your Control4 devices

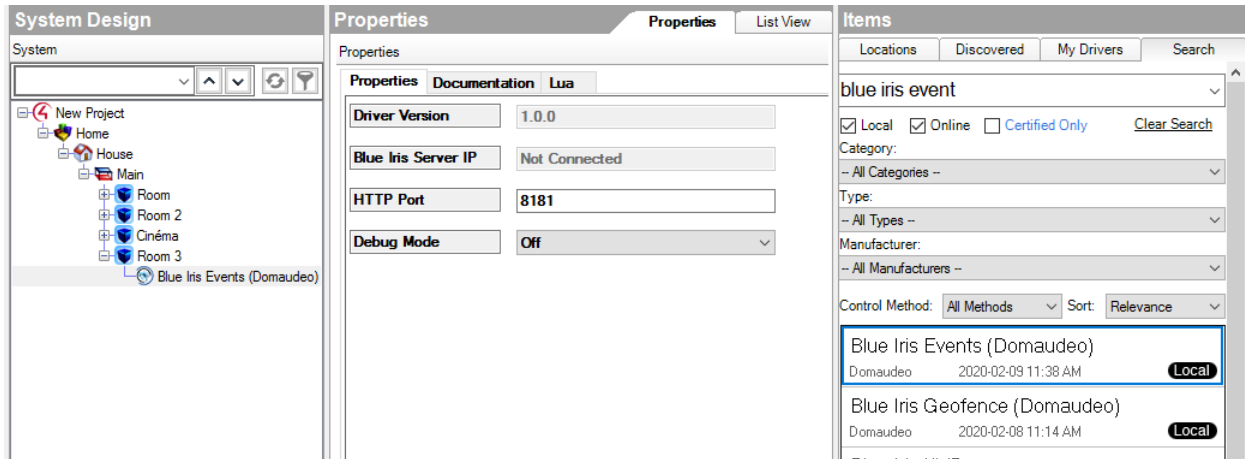
Advanced Properties

Properties	Actions	Documentation	Lua
Driver Version	1.0.0		
Driver Status	success:		
License Key			
License Status	Trial License Verified [24.6 hours left]		
System Name	Maison		
Camera Selector	▼		
Camera Short Name	Cam2 (Porte Avant)		
Camera Name	Cam3 (Sous-sol)		
	Cam1 (Hall)		
	Cam4 (Stationnement)		
	Cam5 (Cuisine)		
Camera State	Enabled		
Touch Location X			



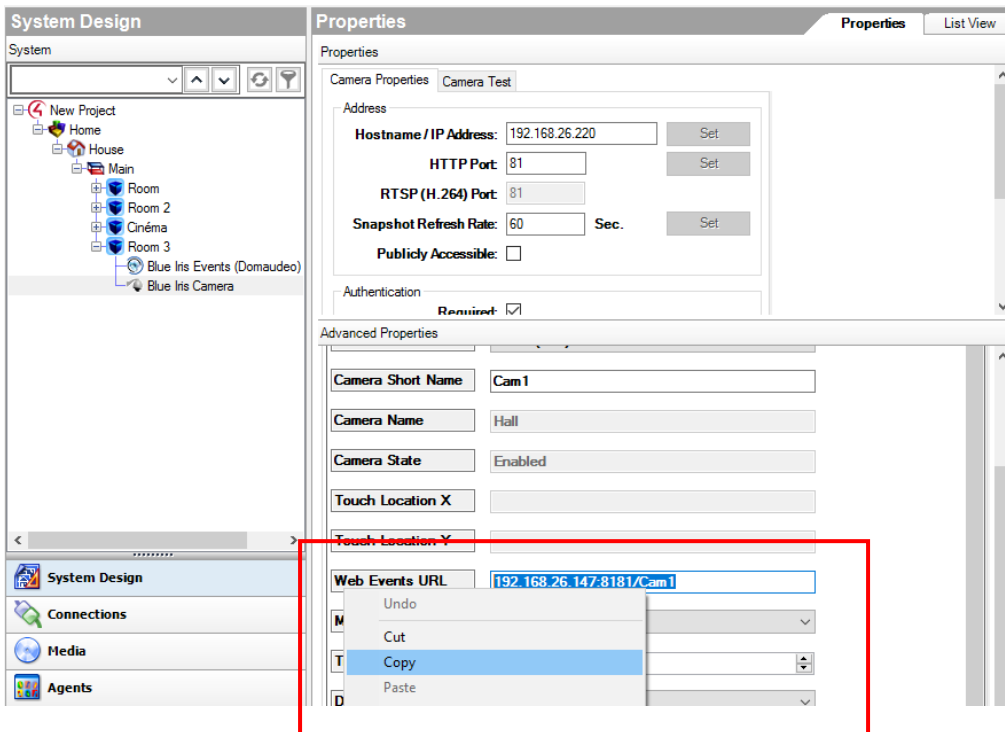
Part 2: Motion and Event trigger

1- Add the Blue Iris Event driver to the project

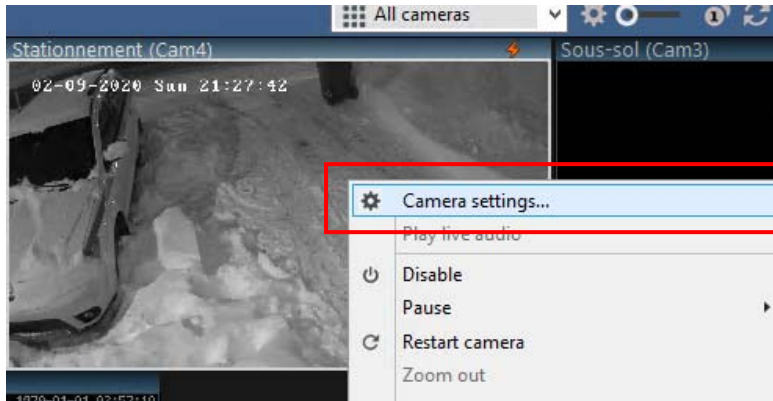


There is nothing to configure in this driver, except if you need to change the default HTTP port used by the internal server.

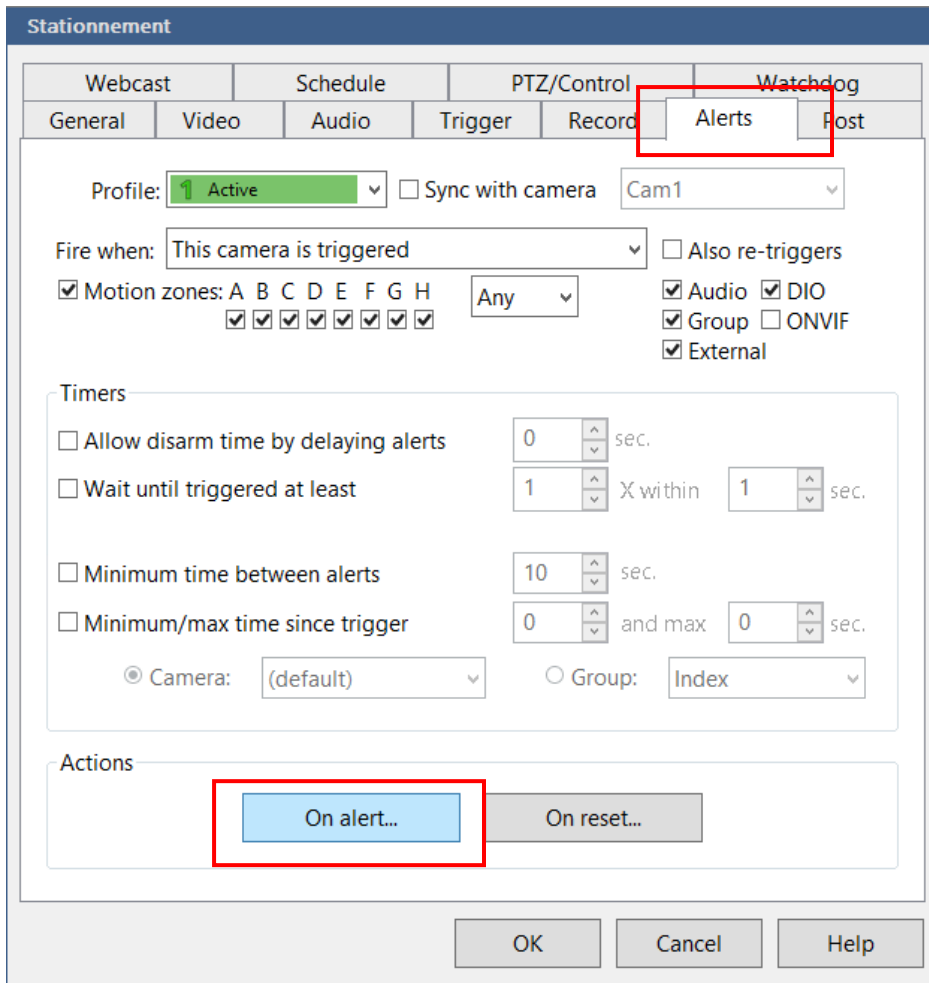
2- Go to any of your Domaudeo Blue Iris Camera or Geofence driver and copy the Web Events URL from the Properties



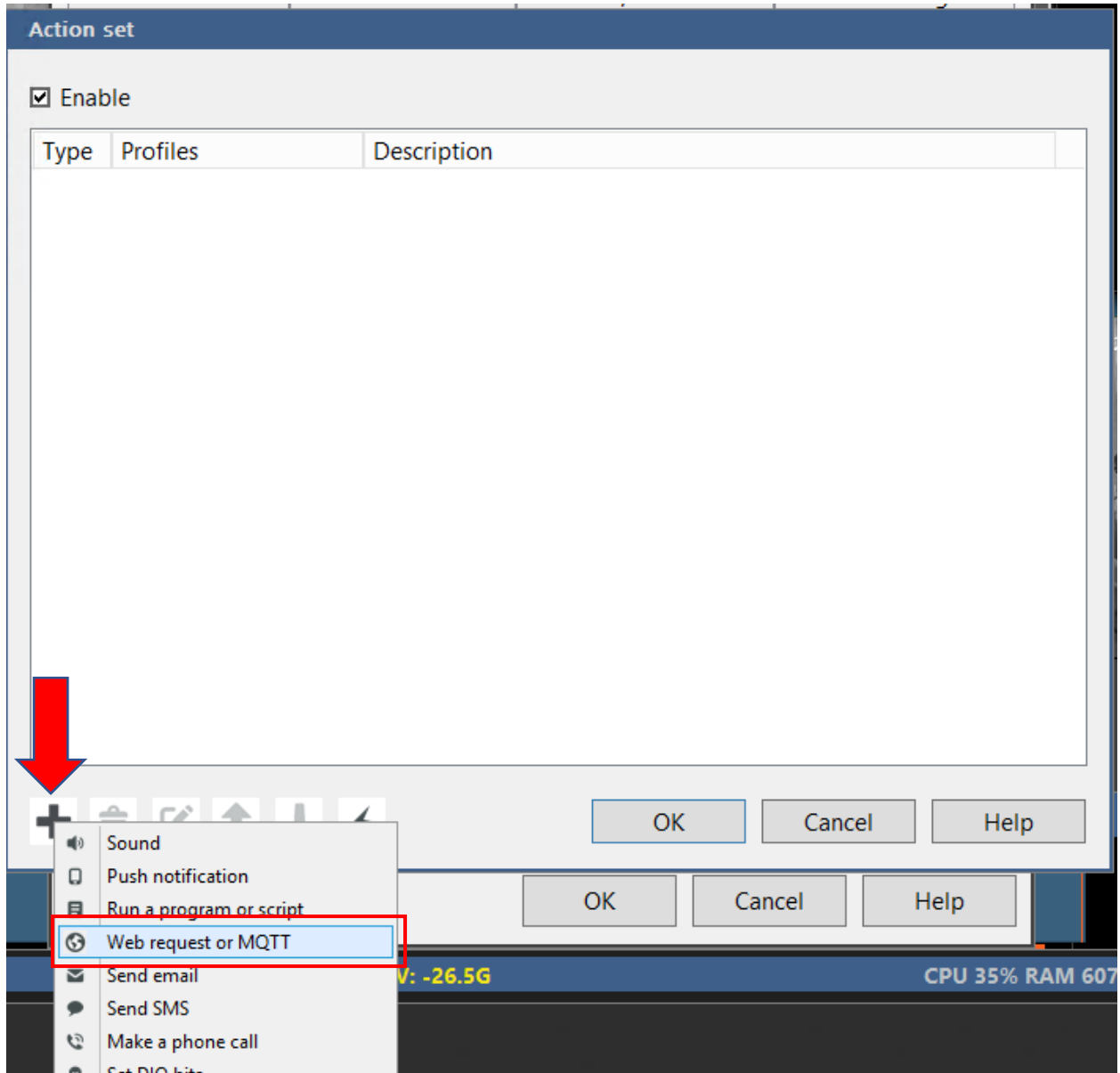
3- In Blue Iris, bring the Camera settings by right clicking a camera view



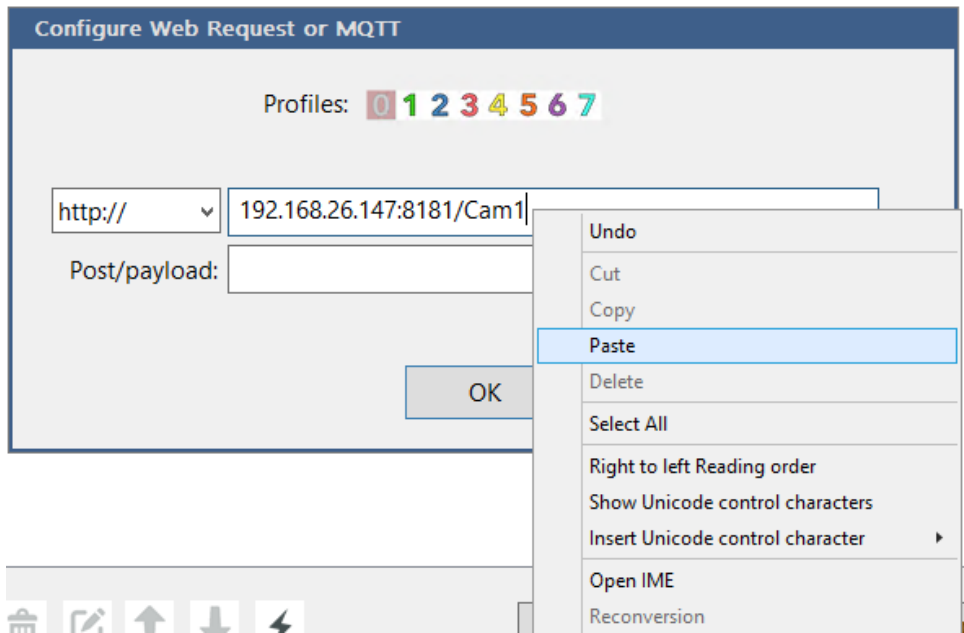
4- Select the "Alerts" tab and click on "On alerts" in the Actions section



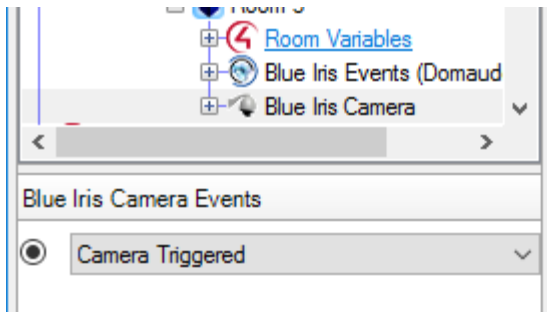
5- In the Action set window, click on the “+” icon and select “Web request or MQTT”



6- Paste the URL you have copied from the driver properties



Now you can use either the Programming action “Camera Triggered”:



Or connect a Motion Sensor to the camera's contact binding:

