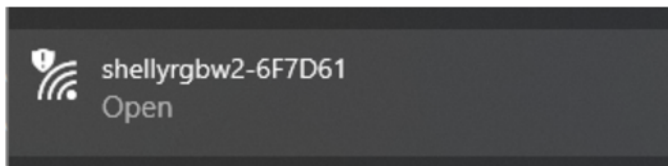


# Shelly Light/Relay/RGBW AIO Driver Suite for Control4 version 1.0.0 (2004)

## Step-by-Step guide

- 1-** Install your Shelly devices and configure them to connect to your local Wi-Fi Network.

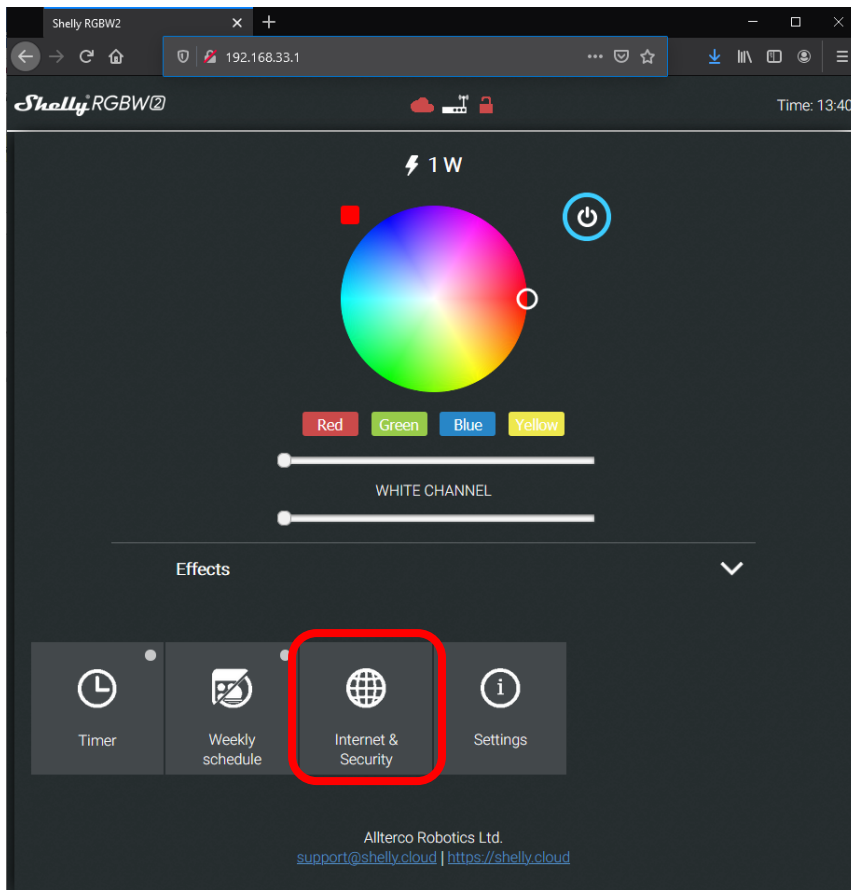
Once the Shelly device is powered on, it will broadcast an open Wi-Fi SSID that look like this:



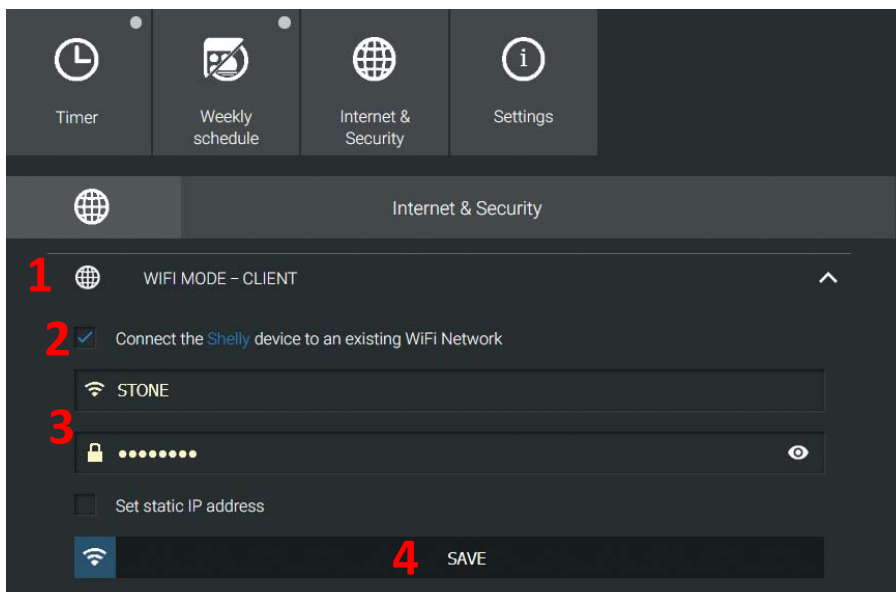
Connect your laptop or mobile device to this Wi-Fi SSID. You don't need to install any App.

Use any web browser to connect to the following address: <http://192.168.33.1/>

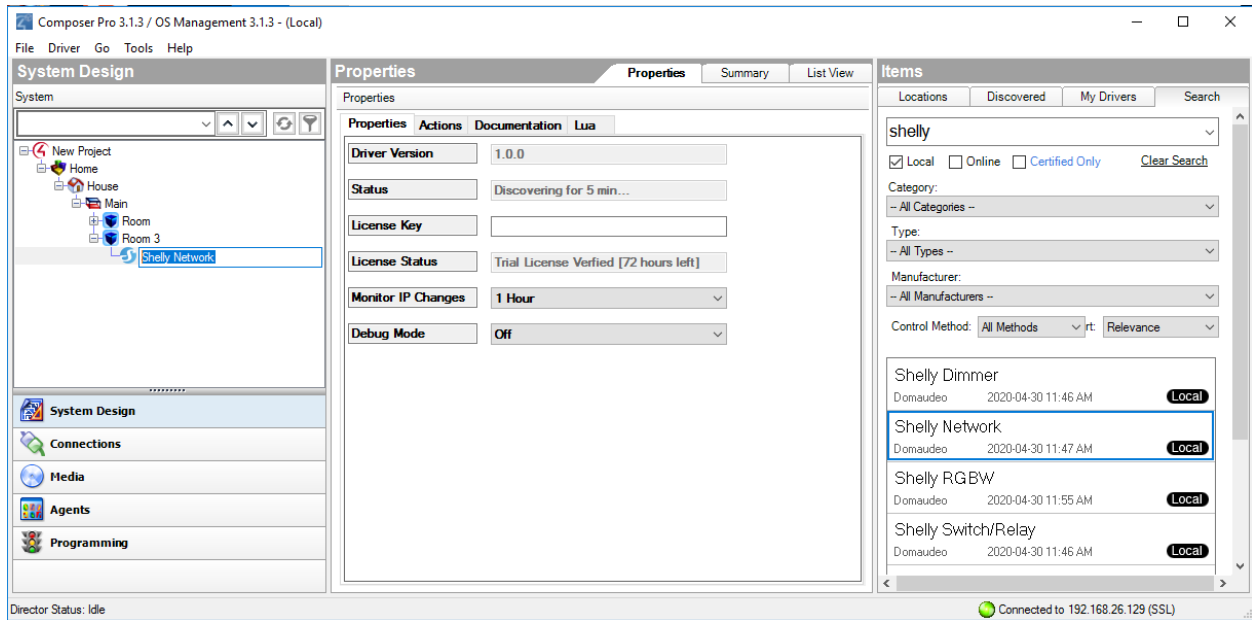
That's brings you to the Shelly built-in configuration page. Select Internet & Security:



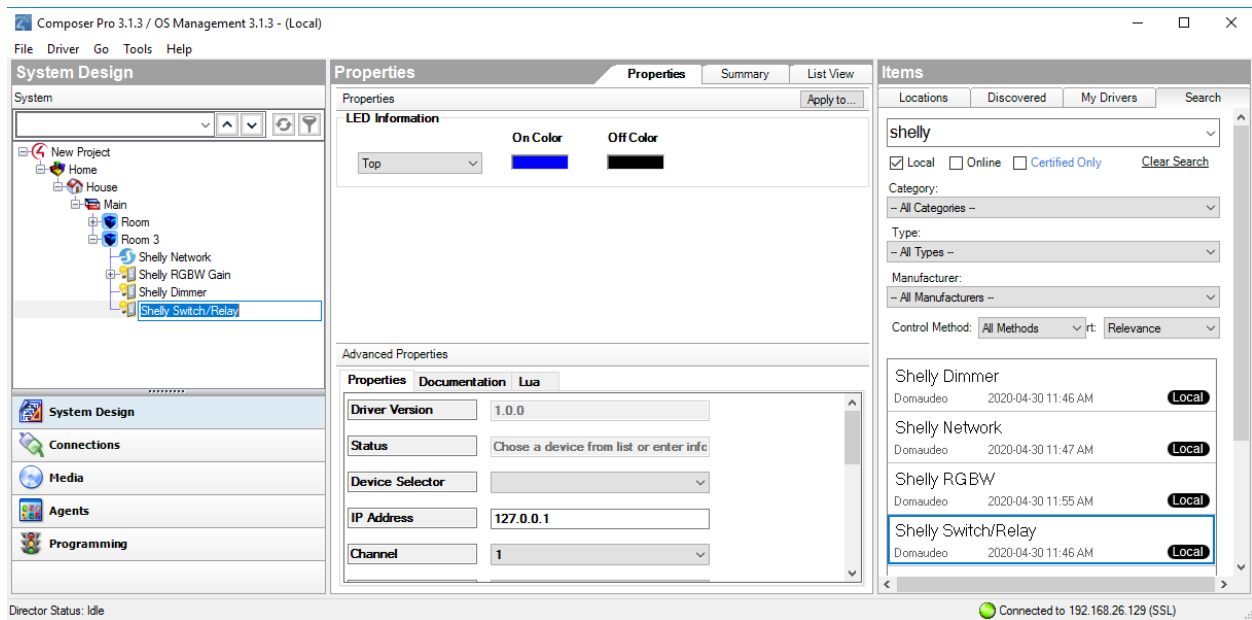
Then select WI-FI MODE – CLIENT, check Connect the Shelly device to an existing WIFI network, enter the local Wi-Fi information and click Save. (static IP is not required)



### 3- Add the Shelly Network driver first to the project and enter your licensing information



### 4- Add Shelly Device drivers as needed



## 5- Wait a few seconds and all the available Shelly devices should populate in the Device Selector property

The screenshot shows the 'Advanced Properties' window with the 'Properties' tab selected. The 'Device Selector' dropdown menu is open, displaying a list of available Shelly devices. The selected device is 'shelly1pm-F27E25 (192.168.26.106)'. Other devices in the list include 'shelly1-77211A (192.168.26.100)', 'shellydimmer-D3E671 (192.168.26.101)', 'shellyrgbw2-6F7D61 (192.168.26.144)', and 'shellyswitch25-69417E (192.168.26.143)'. Other properties shown include Driver Version (1.0.0), Status (Chose a device from list or enter informations manually), IP Address, Channel, Default State (Last State), and Button Type (Toggle Switch).

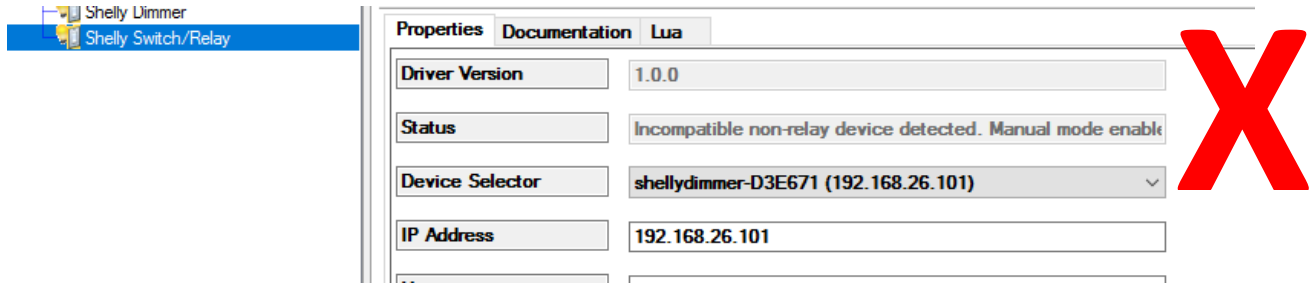
(if for some reason the device list does not populate you can still enter the device IP manually.)

Select the device you want to control:

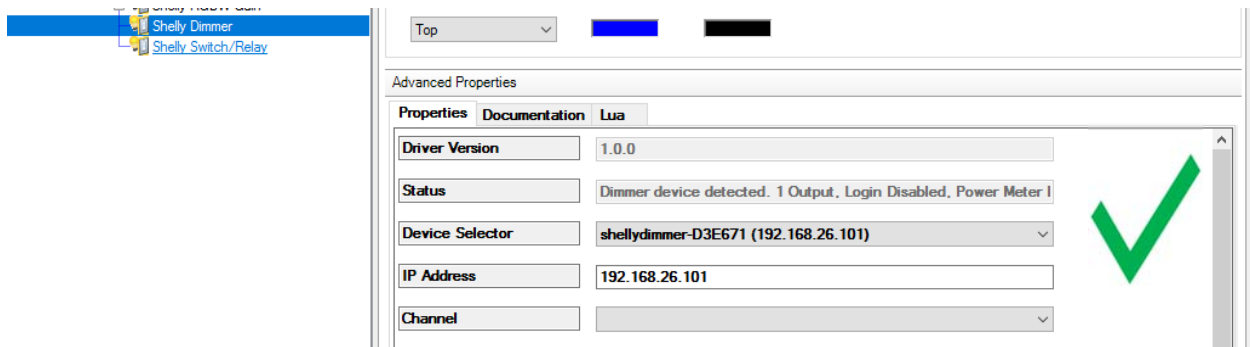
The screenshot shows the 'Advanced Properties' window with the 'Properties' tab selected. The 'Device Selector' dropdown menu is now closed and shows the selected device: 'shelly1-77211A (192.168.26.100)'. The IP Address field is now populated with '192.168.26.100'. Other properties shown include Driver Version (1.0.0), Status (Relay device detected. 1 Output, Login Disabled, Power Met), Channel, Default State (Last State), Button Type (Activation Switch), Polling Interval (sec) (10), Model (SHSW-1), Name (N/A), Device ID (shelly1-77211A), Firmware Version (20190808-100802/???), MAC (DC4F2277211A), and Wi-Fi Signal (-47 dBm).

Information should populate along the driver properties.

If you select an incompatible device, like this dimmer selected withing the Relay driver, you will see a message indicating the device is not compatible:



To use this dimmer, you need to select it from the Shelly Dimmer driver:



You should be good to go. You can now control your Shelly device through Control4 using the Light Proxy or the relay connection if the device is a relay.